

# National Mining Museum Scotland

## A Visual Story/Guide to Visiting the Museum



The Museum is open **7 days** a week. During the summer it is open 10am-5pm and during winter 10am-4pm.

You can turn up on the day or you can book in advance via our website. The Museum is not free and admission costs are listed on the website.

Events run throughout the year so make sure to check the Whats-On page on the website to see what additional activities may be running.

You can reach the Museum by train (Newtongrange train station is a 5-10 minute walk from the Museum with dedicated path), by bus, or by car.

The Museum is located near the A7 and the road can be busy and noisy during rush hour.

**Address:** National Mining Museum Scotland, Lady Victoria Colliery, Newtongrange, Midlothian, EH22 4QN

**Website:** [www.nationalminingmuseum.com](http://www.nationalminingmuseum.com)      **Phone:** 0131 663 7519

**Email:** [education@nationalminingmuseum.com](mailto:education@nationalminingmuseum.com) or [reception@nationalminingmuseum.com](mailto:reception@nationalminingmuseum.com)



# Arrival



You enter the Museum through a set of glass doors, they are automatic and swing inwards.

There is a map of the Museum at the front door you can look at.

The main entrance has a large reception desk where you will be greeted by a Visitor Service Assistant. They will wear a uniform or dark clothing with lanyard or name badge. They are happy to help with any questions you may have.

You can buy your Museum tickets at Reception and this is where you can borrow a Sensory Backpack from too.

During the winter, the heaters may be switched on and it can be noisy as the heat blows out.

-----

Please remember, the Museum might be different from other Museums you may have visited before. We are based at the Lady Victoria Colliery which was a real Victorian coalmine and extra care should be taken in case of any uneven surfaces and remember to listen to any instructions given by staff members and follow the safety signs.



# Visit choices



The first picture shows the Museum's main Reception and two of our Visitor Service Assistants.

Your visit to the Museum can include a Guided Tour with an examiner Tour Guide or a self-led visit using an Audio Guide.

You download the audio guide on to your own digital device (such as a mobile phone). With either option, you can also visit our two floors of exhibitions and our Green Zone exhibition.

The tour will take you around the Lady Victoria Colliery, which was a real coalmine that opened in 1894 and closed in 1981.

The Visitor Service Assistants, pictured here at Reception, are happy to help you decide which option you'd like to choose and they will help you purchase your ticket or you can book in advance on our website.

You can also borrow one of our Sensory Backpacks, use our Visual Sequence Planning boards (symbols/pictures), or borrow ear defenders from Reception.



# Other people you may meet



As well as Visitor Service Assistants, you may see our Tour Guides, normally dressed in orange boiler-suits.

The top photograph is from the second floor in the Museum, where the Guided Tour begins and you will find the Tour Guides are happy to help you with any questions you may have.

You may also see other Museum staff members such as managers and facilities team members during your visit. All Museum staff will either wear a uniform with our logo on it or a lanyard/name badge.

All staff are happy to help you.



# Entrance to the Museum



When you leave Reception, the gift shop is located directly in front of you and the café and main toilets are to the left.

If you turn right, you can take the stairs or lift to start exploring the Museum.

If you want to visit the Green Zone (including Play Park and Picnic Area), go to the café and through the glass doors at the back of the room.

The Visitor Service Assistants will give you directions as well when you arrive.



# Gift Shop



The gift shop is located next to the Reception area, at the beginning of the Museum.

If you want to buy something, the Visitor Service Assistants can help you. Once you have finished exploring the Museum you can come back in via the main entrance to visit the shop later if you want.

The shop often has music playing in the background and there can be smells from diffusers. The layout of the shop changes throughout the year and at Christmas time will have Christmas decorations on display, including different lights.

The café is next to the shop and you may hear the coffee machine and other equipment making noise.

# Café



When you leave the Museum reception, you can turn **left** to visit the café and/or the bathrooms.

The café can be busy and noisy.

The coffee machine can be noisy, please ask a café assistant to warn you before they use it.

Café staff members wear black aprons with our logo on them.

The café menu is displayed on a board above the desk and there are premade options available from the fridge.

If you want to bring your own food, just let a member of staff know.

You can eat inside or outside at a Picnic bench.



# Toilets



The main toilets are located along the back left wall of the café. There is an accessible toilet as well as individual male/female toilets.

The male/female toilets have hand dryers. The accessible toilet has a hand dryer and paper towels available.

There is a changing area in the accessible toilet.

Other toilets are on the 2nd floor of the Museum. There are three toilets on the 2nd floor: a male, a female and an accessible toilet.





# The Green Zone



The Green Zone is located at the rear of the café. It includes a picnic area, Play Park, Energy Lab (left) interactive exhibition, and Interactive Zone interactive exhibition (right).

The Green Zone provides information about engineering, energy and climate change.

It is interactive with different activities to explore, play with and learn from.

Some of the interactive exhibits will make a noise when working.



# Getting Around

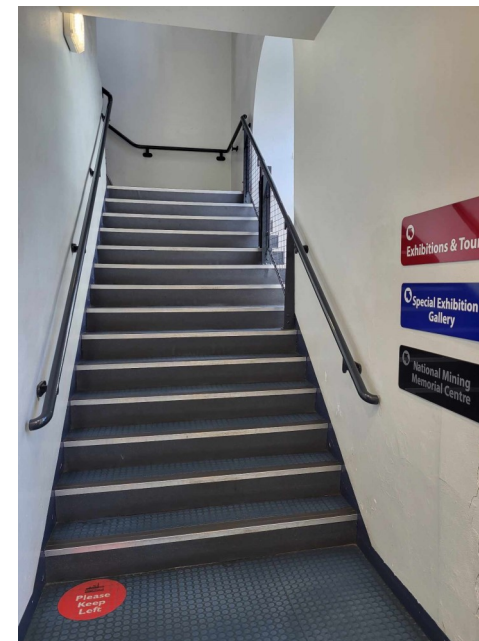


You can access the main area section of the Museum (to the 1st and 2nd floor exhibitions, the Pithead and Tour options begin) by using the stairs or the lifts.

The lifts have small mirrors added to help wheelchair users reverse in and out.

The lift doors open on both sides.

The panel to operate the lift is on the left hand side.



# Museum Layout—Exhibitions



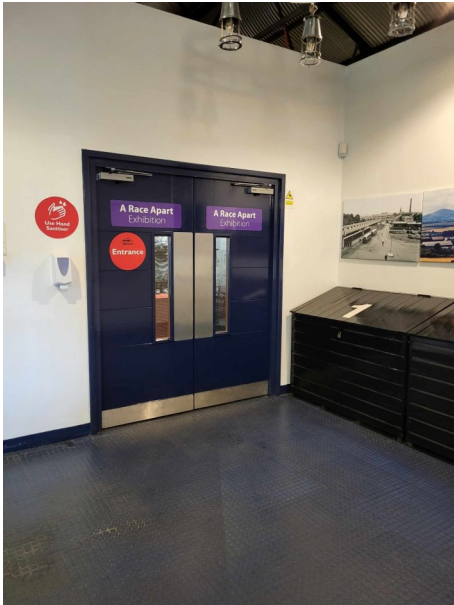
The Museum's main exhibitions are on two floors.

The 1st Floor exhibition is called "The Story of Coal"

The 2nd Floor exhibition is called "A Race Apart"

You enter both exhibition floors through push doors.

The 2nd Floor is also takes you to the coalmine (called the Pithead and Underground Experience) and this is where you would start your Guided Tour or Audio Tour.



Toilets are located on the 2nd Floor as well.

# 1st Floor Exhibition—The Story of Coal



The Story of Coal exhibition looks at the history of coal mining in Scotland from the formation of coal, the Industrial Revolution to more modern coal mining.

It contains written information boards, real objects from our Collection, and interactive displays where you can lift panels or press buttons to make things move.

The exhibition starts with a display about fossils and the formation of coal. There is a motion activated dinosaur roaring noise playing in the background when you first enter.

Throughout the exhibition there are background noises of machines and steam engines playing.



The interactive panel about ventilation and gases found underground makes a sudden “bang” noise when you lift the panel called “firedamp”.

There is seating located in both exhibition floors for you to use.

There is a one way system in place.

## 2nd Floor Exhibition—A Race Apart



A Race Apart exhibition looks at the people involved in Scotland's mining history. It's all about social history and follows a chronological order.

This exhibition has background noises and voices speaking throughout.

The start of the exhibition is darker than the rest of the floor due to images illuminating on the wall.

There is a crawl through tunnel you can go through, there is a mannequin at the end of the short tunnel to show what life was like for children who worked underground.

There is a Victorian wash day scene where you can touch all the objects and dress up if you'd like to.

The end of the exhibition takes you to where the Guided Tour starts and the bathrooms.

## 2nd Floor—Guided Tour or Audio Tour

The Guided Tour or Audio Tours start on the 2nd floor, there are signs showing you where to start.

The Guided Tours may have other people on the tour with you. They run throughout the day at set times.

If you'd like to handle any objects that the Tour Guides show you, please just ask them. There are also some helmets you can try on.

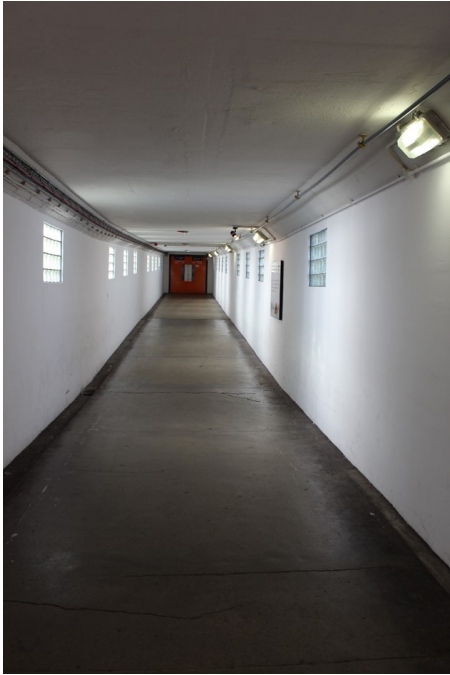
The Tour Guides may ask questions during the tour, you don't need to know the answer as they will tell you. You can ask them any questions but they may ask you to wait to ask until certain points in the tour.

The Guided Tour and Audio Tour will last around 1hr 15 minutes and will take you through the Gantry, The Pithead, into a recreated Underground experience and finish with the Winding Engine (at the Museum's Reception area)

If you are scared or nervous, let the Tour Guides know and they will try to help.



# Gantry & Pithead



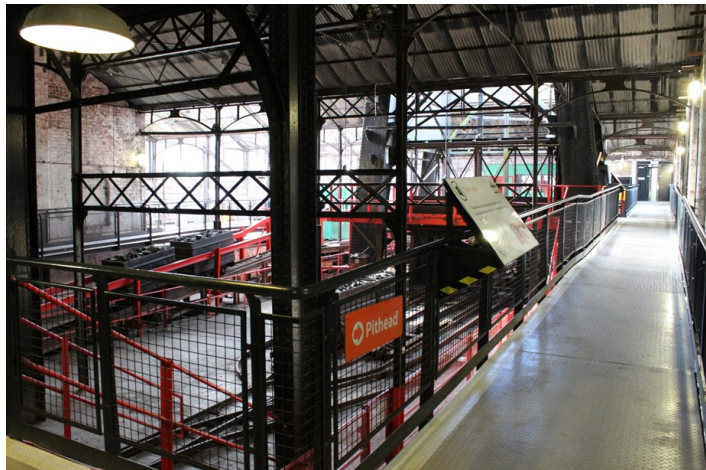
When you start your tour, you will walk along the Gantry to reach the Pithead (top photograph). It has an echo and when there are many people there it can become noisy.

Go through the double doors at the top and turn left to the Pithead.

The Pithead is the top of the coalmine with the shaft which would take the miners up and down to collect coal.

At the Pithead, you can walk around the path which will show you where the miners would go underground. There are sometimes bird noises and “creaking” noises due to the metal work there, these are not loud.

Please remember this was a working coal mine and take extra care when walking.



# Pithead to Underground Experience/ Coalface



From the Pithead, follow signs for the Coalface. You can either take the lift to level 0 or you can use the stairs.

The stairs are metal and can be noisy with footsteps.

This is recreated, you will not really be underground.





# Underground Experience/ Coalface/ Coalroad



Enter the Underground Experience by pushing the double doors. It is dark inside but there are lights throughout. If you are using a Sensory Backpack you can use your torch as well.

It is completely safe and you are not really underground, it is designed to let you feel like you are and show you the conditions that miners worked in.

There is a dusty smell and you will hear background noise of machinery. You may wish to wear ear defenders.

At the end of the coalroad, you can walk through the coal cutter machine but be careful of uneven surfaces and loose stones.

Follow the path and signs back outside.



## Route Outside



Follow the path around the outside of the Museum. Please take care when walking due to uneven surfaces. You will pass the Memorial Centre, which you can explore, as well as view our two newly restored locomotives.

The locomotives have information panels close to them and you can look at them but please do not climb on them.



# Winding Engine



Follow the path and signs for the Winding Engine.

This was Europe's largest steam engine and was used to haul the cages up and down the mine shaft to the coalmine.

You access it by going up the stairs and through the red door at the top. Inside, you will see the large engine itself. You can't touch the engine as it old and covered in oil.

Return to the main Museum entrance by going back down the stairs.

There is no lift access for the Winding Engine.



## Fire Alarm—what to do in an emergency



If the fire alarm goes off, please follow the Fire Exit green signs or lights and make your way out of the building quickly and calmly.

You should go to the Museum car park and a member of staff will be there to help.

A member of staff will come round the Museum to check everyone is out. Do not hide.

Do not use the lifts, please use the stairs to exit in case of emergency.

If you cannot use the stairs, wait by the evacuation points at the stairs and a member of staff will help you.



We hope you have a great visit with us!

If you need any assistance, such as a quiet space to use, please ask a member of staff who will be happy to help.

If you have any questions or would like to provide feedback please email us at [education@nationalminingmuseum.com](mailto:education@nationalminingmuseum.com)